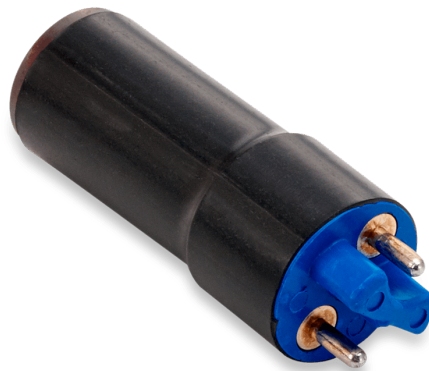


72233

End window-alpha-beta-gamma detector



GENERAL SPECIFICATIONS

MAXIMUM LENGTH (INCH/MM)	2.71/68.8
MAXIMUM DIAMETER (INCH/MM)	0.98/25.0
GAS FILLING	Ne +Halogen
EFFECTIVE LENGTH (INCH/MM)	1.5/38.0
CATHODE MATERIAL (INTERNAL/EXTERNAL)	446 Stainless Steel
EFFECTIVE DIAMETER (INCH/MM)	0.78/19.8
CONNECTOR	B2A
OPERATING TEMPERATURE RANGE °C	-40 to +75

WINDOW SPECIFICATIONS

MATERIAL	Mica
EFFECTIVE DIAMETER (INCH/MM)	0.78/19.8
AREAL DENSITY (MG/CM²)	2.5 - 3.0

ELECTRICAL SPECIFICATIONS

RECOMMENDED OPERATING VOLTAGE (VOLTS)	500
RECOMMENDED ANODE RESISTOR (MEG OHM)	3.3
OPERATING VOLTAGE RANGE (VOLTS)	450 - 650
MAXIMUM PLATEAU SLOPE (%/100 VOLTS)	10
MINIMUM DEAD TIME (MICRO SEC)	120
GAMMA SENSITIVITY CO60 (CPS/mR/HR)	45
TUBE CAPACITANCE (PF)	3
WEIGHT (GRAMS)	60
MAXIMUM BACKGROUND SHIELDED 50MM PB + 3MM AL (CPM)	30
MAXIMUM STARTING VOLTAGE (VOLTS)	350
MINIMUM ANODE RESISTOR (MEG OHM)	2.2

