

7139

Energy compensated gm detector



GENERAL SPECIFICATIONS

MAXIMUM LENGTH (INCH/MM)	1.86/47.2
MAXIMUM DIAMETER (INCH/MM)	0.49/12.85
GAS FILLING	Ne +Halogen
EFFECTIVE LENGTH (INCH/MM)	1.1/27.9
CATHODE MATERIAL (INTERNAL/EXTERNAL)	446 Stainless Steel
EFFECTIVE DIAMETER (INCH/MM)	0.308/7.82
CONNECTOR	Pin
OPERATING TEMPERATURE RANGE °C	-10 to +75

ELECTRICAL SPECIFICATIONS

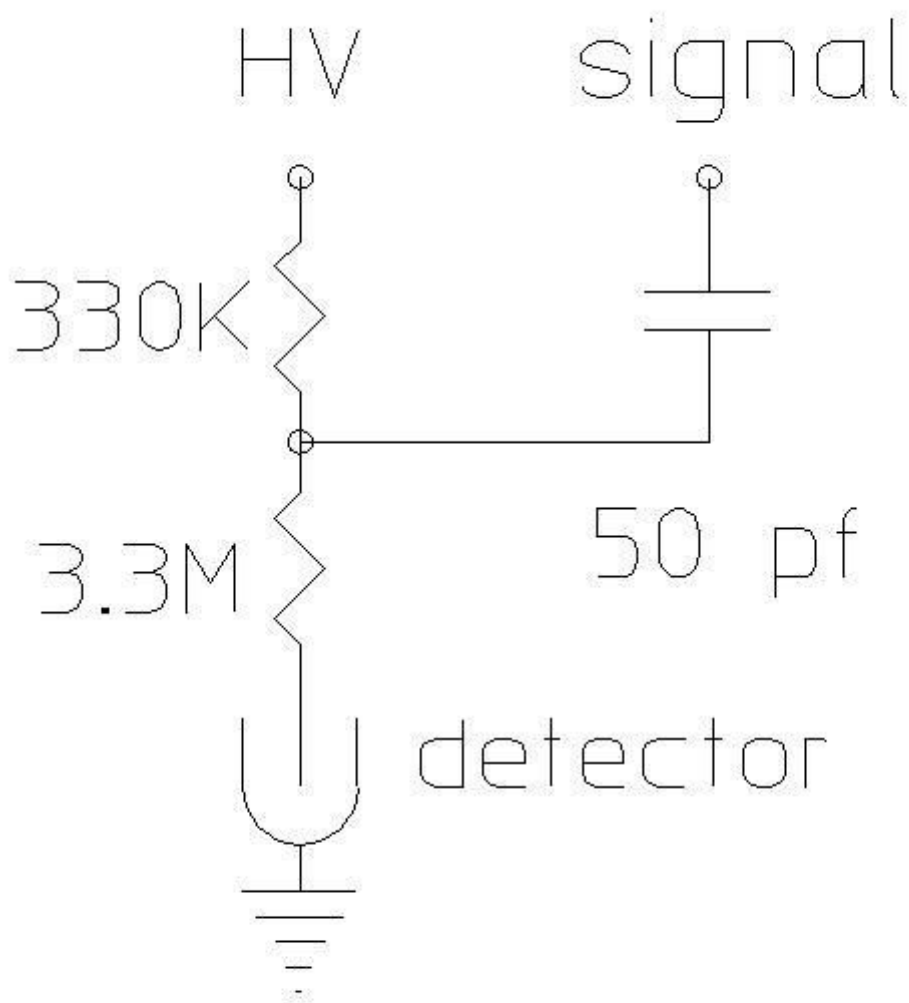
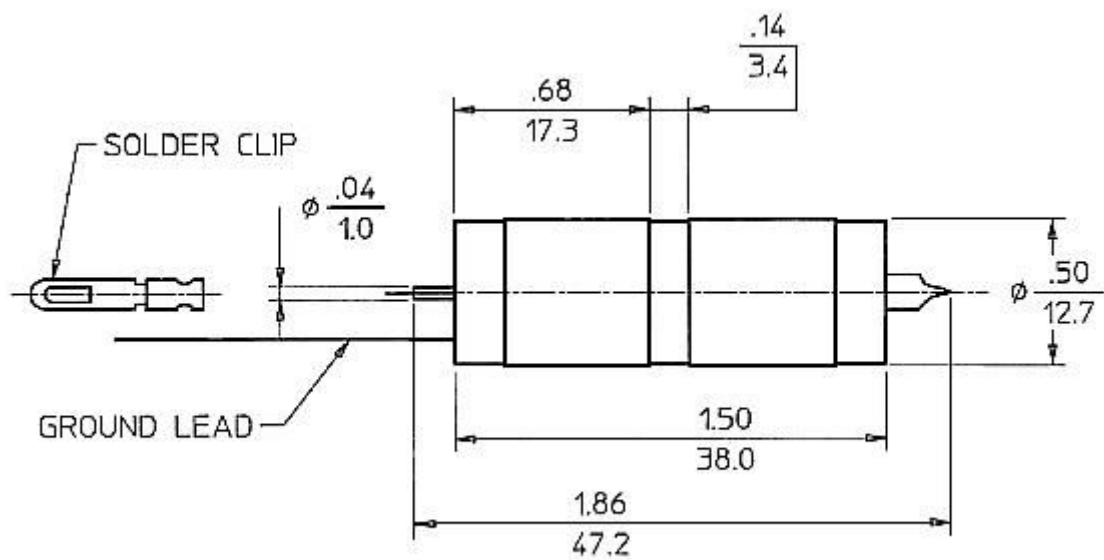
RECOMMENDED OPERATING VOLTAGE (VOLTS)	500
RECOMMENDED ANODE RESISTOR (MEG OHM)	3.3
OPERATING VOLTAGE RANGE (VOLTS)	450 - 650
MAXIMUM PLATEAU SLOPE (%/100 VOLTS)	8
MINIMUM DEAD TIME (MICRO SEC)	45
GAMMA SENSITIVITY CO60 (CPS/mR/HR)	7.5
TUBE CAPACITANCE (PF)	3
WEIGHT (GRAMS)	23
MAXIMUM BACKGROUND SHIELDED 50MM PB + 3MM AL (CPM)	4
MAXIMUM STARTING VOLTAGE (VOLTS)	380
MINIMUM ANODE RESISTOR (MEG OHM)	2.2

FILTER SPECIFICATIONS

MATERIAL	Sn
THICKNESS (INCH/MM)	0.08/2.0

WALL SPECIFICATIONS

THICKNESS (INCH/MM)	0.002/0.05
AREAL DENSITY (MG/CM ²)	40



circuit #6

