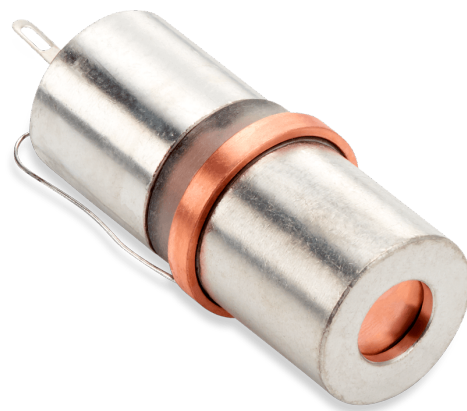


71210

Energy compensated gm detector



GENERAL SPECIFICATIONS

MAXIMUM LENGTH (INCH/MM)	1.82/46.2
MAXIMUM DIAMETER (INCH/MM)	0.84/21.4
GAS FILLING	Ne +Halogen
EFFECTIVE LENGTH (INCH/MM)	1.5/38.1
CATHODE MATERIAL (INTERNAL/EXTERNAL)	446 Stainless Steel
CONNECTOR	Pin
OPERATING TEMPERATURE RANGE °C	-10 to +75

ELECTRICAL SPECIFICATIONS

RECOMMENDED OPERATING VOLTAGE (VOLTS)	500
RECOMMENDED ANODE RESISTOR (MEG OHM)	4.7
OPERATING VOLTAGE RANGE (VOLTS)	450 - 650
MAXIMUM PLATEAU SLOPE (%/100 VOLTS)	6
MINIMUM DEAD TIME (MICRO SEC)	90
GAMMA SENSITIVITY CO60 (CPS/mR/HR)	18
TUBE CAPACITANCE (PF)	3
MAXIMUM BACKGROUND SHIELDED 50MM PB + 3MM AL (CPM)	10
MAXIMUM STARTING VOLTAGE (VOLTS)	350

FILTER SPECIFICATIONS

MATERIAL	Sn
THICKNESS (INCH/MM)	0.08/2.0

WALL SPECIFICATIONS

THICKNESS (INCH/MM)	0.012/0.30
AREAL DENSITY (MG/CM ²)	216

